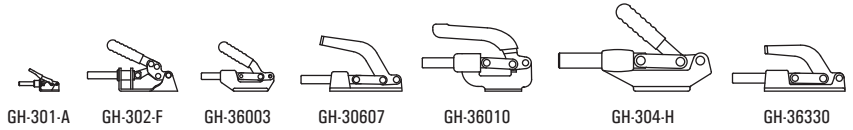
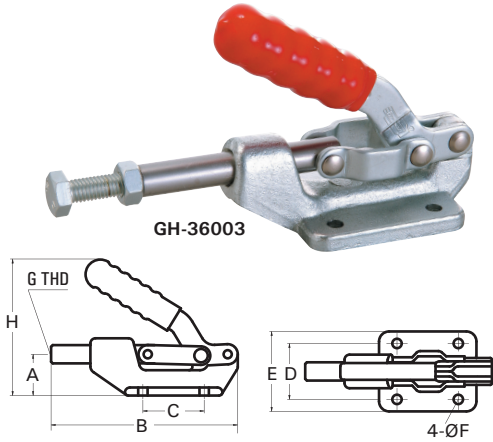


Good Hand™ Toggle Clamps



Toggle design allows instant lock & release of the workpiece.

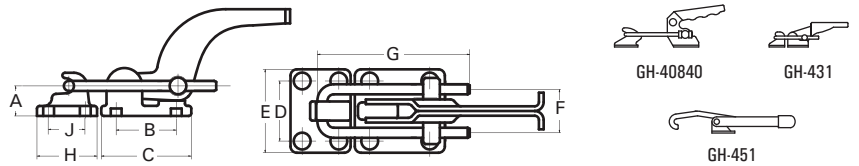
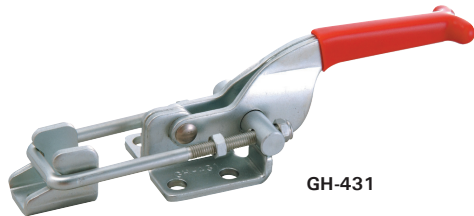
Push/Pull Straight Line Action



Part No.	Capacity	Plunger Stroke	A	B	C	D	E	ØF	G	H	Weight
GH-301-A	100 lbs	0.63	0.50	2.68	0.63	0.63	1.06	0.17	8-32	1.73	0.11 lb
GH-302-F	300 lbs	1.25	0.96	5.51	1.38	1.61	2.20	0.20	5/16-18	3.07	0.66 lb
GH-36003	600 lbs	1.25	0.97	4.69	1.44	1.34	1.97	0.26	5/16-18	3.23	0.78 lb
GH-30607	700 lbs	1.63	0.69	6.03	1.37	1.63	2.19	0.28	5/16-18	3.28	1.54 lbs
GH-36010	800 lbs	1.63	1.75	6.75	1.63	1.63	2.25	0.34	3/8-16	4.06	1.76 lbs
GH-304-H	1,500 lbs	2.36	1.75	9.38	2.00	2.00	2.81	0.34	1/2-13	6.76	3.26 lbs
GH-36330	2,500 lbs	2.00	0.81	7.00	1.37	1.63	2.25	0.34	3/8-16	2.83	2.06 lbs

UNIT: inches

Latch Type Pull Action



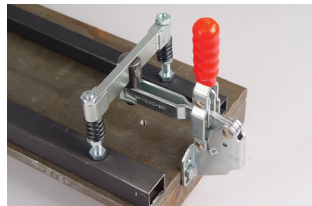
Part No.	Capacity	A	B	C	D	E	F	G	H	J	Weight
GH-40840	550 lbs	0.50	0.75	1.38	1.26	1.89	1.12	4.30	1.30	0.55	0.67 lb
GH-431	700 lbs	0.50	0.63	1.03	0.75	1.11	0.75	2.24	0.78	0.39	0.50 lb
GH-451*	375 lbs	1.44	0.75	1.50	1.37	1.94	0.31	8.31	2.00	1.50	0.59 lb

*Adjustable single hook design. Optional latch plate GH-451-LP.

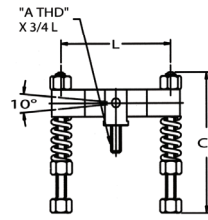
UNIT: inches

Yoke Assemblies

Hold two workpieces with one stroke. The yokes have spring loaded, extra-wide spindles that provide strong holding power that adjusts to varying material thickness and sizes. Hold two workpieces or long pieces of metal.



GH-YB-3145 paired with a vertical side-mount clamp (GH-12130-SM)



Spring Solid Height : 0.5
Spring Free Height : 1"

Part No.	A	L	C1
GH-YB-3145	5/16-18	4.5	2.5
GH-YB-3160	5/16-18	6.0	2.5
GH-YB-3745	3/8-16	4.5	3.0
GH-YB-3760	3/8-16	6.0	3.0

UNIT: inches

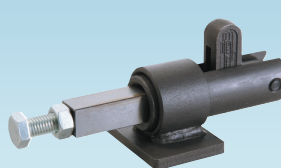
Please call us at 800.989.5244 to request a comprehensive Good Hand™ Catalog.



GH-75027



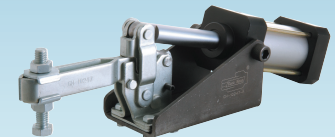
GH-43160



GH-30509



GH-70310



GH-10247-A